

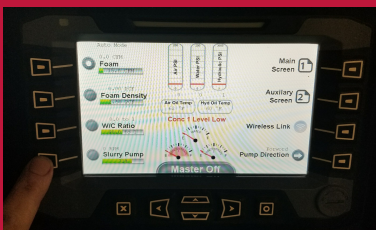


# Cellular Concrete Equipment

SEE WHAT WE CAN DO FOR YOU



CF-CT30



**RICHWAY'S EXCLUSIVE G2  
AUTOMATED CONTROL SYSTEM**



**FULLY INTEGRATED  
DESIGN**



**MAXIMUM  
EFFICIENCY**

# CF-CT30 SERIES

## FEATURES

- Foam Injection Technology™
- Easily tow with any truck
- Rugged construction

## APPLICATIONS

- Void Fills
- Sliplining
- Utility Trench Fill
- Flowable Fill/Geofoam Alternative
- Soil Stabilization

Richway's CT-30G brings new levels of innovation and production capabilities for the production of cellular concrete. The fully integrated design means that the CT-30G is the only piece of equipment needed to produce large volumes of high consistency cellular concrete. Plus, it's smaller size and production output is ideal for smaller jobs and hard to access areas.

The CT-30G is designed as a continuous production machine. This means that instead of having a partial load of slurry delivered to the jobsite and "dosing" the truck with foam, you can utilize full loads of slurry delivered to the jobsite. One 10 yard<sup>3</sup> (7.65 m<sup>3</sup>) load of slurry can yield up to 40 yards<sup>3</sup> (30.58 m<sup>3</sup>) of 30 PCF (480.55 kg/m<sup>3</sup>) material, at production rates up to 30 yards<sup>3</sup> per hour (22.94 m<sup>3</sup>/hr). The integrated rotor stator pump and mixing system is capable of pumping pressure to 125 psi..



## SPECIFICATIONS

- Configuration: Trailer Unit
- Production Output: Up to 30yds<sup>3</sup>/hr (22.9 m<sup>3</sup>/hr)
- Production Densities: 110 PCF to 30PCF (2243 kg/m<sup>3</sup> to 481 kg/m<sup>3</sup>)
- Hopper Capacity: 12 cu. ft. (.23 m<sup>3</sup>)
- Pump: Progressive Cavity
- Energy Source: 24.8HP Kubota Diesel Engine (Tier 4 Final)
- Air Compressor: 15 CFM (425 l/min) rotary screw
- Hydraulic System: Load Sensing
- Water Tank: 300 gallons (1136 l)
- Concentrate Capacity: 55 gal (208 l)
- Length: 162 in (412 cm)
- Width: 87 in (221 cm)
- Height: 74 in (188 cm)
- Weight (Dry): 3,600 lbs (1633 kg)



**Richway Industries Ltd.**  
**www.richway.com 800-553-2404**  
**Janesville, IA USA**